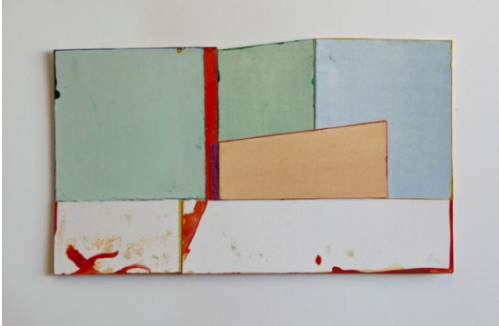


Digital Images Available for the 2010 Museum School Art Sale

For high-resolution images call 617-369-3605 or e-mail bwitkowski@smfa.edu.

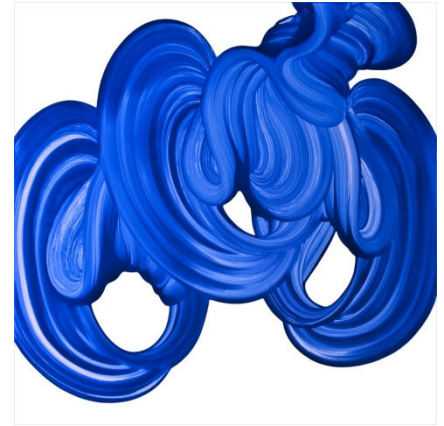
All images courtesy of the artists unless otherwise noted.



Julie S. Graham, *GSI-8*, 2010.
Watercolor, paper collage. 9x12 inches.



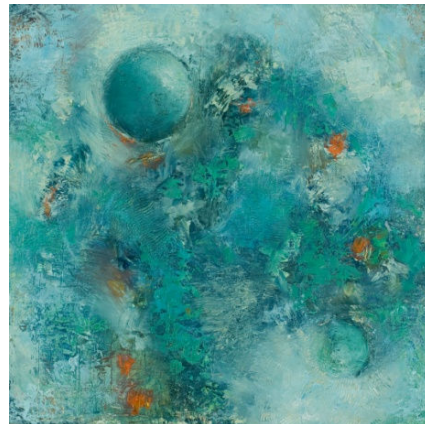
Julia Groos, *Art Deco Necklace*,
2009. Sterling silver.



David Palmer, *Elli*, 2009.
Acrylic on linen. 62x62 inches.



Judith Larsen, *Blind Spot*, 2010.
Pigment print on Somerset paper.
33x42 inches.



Louise Weinberg, *Lost and Found
and Lost*, 2009. Oil on canvas. 18x18 inches.



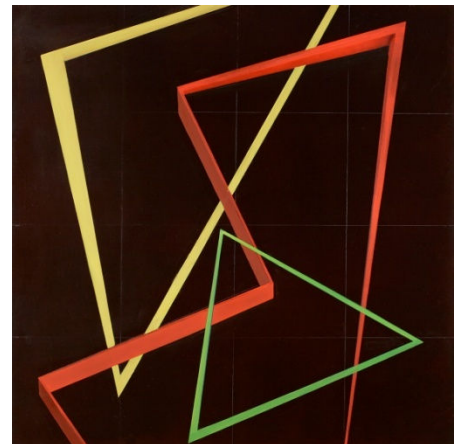
Paige Mazurek, *Lone Ranger*, 2010.
Archival inkjet print. 4x5 inches.



Gerry Bergstein, *Valentine*, 2009.
Mixed media assemblage. 23x21x9 inches.
Courtesy of Gallery NAGA.



Peter Scott, *Pick-Up*, 2008. Mixed
media on paper. 25x33 inches. Courtesy
of Gallery NAGA.



Jill Weber, *Structural Diagram 4*,
red/yellow/green, 2010. Oil on board.
24x24 inches.