

**Contact:** Brooke Daniels  
617-369-3605  
bdaniels@smfa.edu



FOR IMMEDIATE RELEASE

**“SMFA Traveling Scholars” Celebrates 2010 Traveling Scholarship Award Recipients  
at the School of the Museum of Fine Arts, Boston**

*Culminating exhibition for six artists awarded funds to enrich their work through travel and study*

BOSTON, MA (April 6, 2012)—Support for exploration and research are critical in the early stages of an artist’s career. The School of the Museum of Fine Arts, Boston (SMFA), has a strong history of providing these opportunities, none more important or enduring than the SMFA Traveling Scholars program. Since 1899, this program has awarded funds to select artists for post-graduate work and travel. Over the years these awards have recognized the most innovative, ambitious work, including notable alumni Nan Goldin, Mike and Doug Starn, Ellen Gallagher, Omer Fast, Cliff Evans and Rachel Perry Welty.

On view April 7–May 5, 2012 the School invites you to experience “**SMFA Traveling Scholars**,” which features works by the 2010 award recipients who have spent nearly two years traveling, exploring and creating inspired bodies of new work specifically for this exhibition:

**Milo Fay’s** tintype photographs of her family’s 1890s dollhouse explore the collective memories of the childhood experience. **Atsuko Ito’s** interactive video installation invites viewers to act as the object or screen onto which her work is projected. **Greg Menceff’s** architectural sculptures explore the process of construction, the role of these objects (if any) and how they originated. **Christopher Mark Robinson’s** multimedia installation examines the tenuous relationship between artists, patrons and the general public through institutional representations of historical guilt and personal tragedy. **Ani Sutton’s** interactive installation *Gardens of the Future: Plot(ing) in Memorial* investigates gardens as sites for dialogue, intervention and reflection on the ongoing impact of climate change.

SMFA remains committed to providing our artists with opportunities to expand their cultural and artistic boundaries. While there may be changes in what and how artists study and where Scholars travel, these experiences continue to be vital their education and evolving practices.

**“SMFA Traveling Scholars”**

April 7–May 5, 2012

Mrs. E. Ross Anderson Auditorium, SMFA  
230 The Fenway, Boston MA

[www.smfa.edu/traveling-scholars-2012](http://www.smfa.edu/traveling-scholars-2012)

Gallery hours: Monday–Saturday, 10 am–5 pm; Thursday 10 am–8 pm; closed Sundays and holidays.

Admission is free

**RELATED EVENTS**

Opening reception: April 9, 5–7 pm

With performance by Andi Sutton 6–6:45 pm

Artist talks: April 11, 12:30–1:30 pm

Milo Fay, Greg Menceff, Christopher Mark Robinson and Andi Sutton

**ARTIST BIOS**

**Milo Fay** (b. 1947 in Boston, MA) received her JD in 1982 from Golden Gate University School of Law, a BA in 1965 from University of Denver and Fifth Year Certificate in 2010 and Studio Diploma in 2009 from SMFA.

With her scholarship funds, Fay studied wet-plate collodion tintype and glass negative process with France Scully Osterman and Mark Osterman) and John Coffey and completed a soft-focus lens workshop with Russell Young. She was an invited guest at the Goa Center for Alternative Photography (India) and also traveled to Cambodia. Fay was a winner of the 2010 Soho Photo Alternative Process Competition. She has exhibited at SMFA, Boston (2008, 2010), Soho Photo, New York (2010) and Griffin Museum of Photography, Winchester, MA (2003); her work was twice selected for SMFA's Medal Award Auction (2008, 2010).

**Atsuko Ito** (b. 1978 in Kyoto, Japan) received Fifth Year Certificate in 2010 and Studio Diploma in 2009 from SMFA and BM from Berklee College of Music in 2005.

**Soojin Kim** (b. 1976 in Seoul, Korea) received her MS in 2002 from Boston University, Fifth Year Certificate in 2010 and Studio Diploma in 2009 from SMFA and BS in 1999 from Ewha Womans University. Her exhibitions include: Fountain Art Fair, New York (2012); Children's Museum, Boston (2011); Alpha Gallery, Boston (2010); Manifest Gallery, Cincinnati, OH (2009); Brookline Arts Center, Brookline (2009) and Arnold Arboretum, Boston (2008). She is represented by Tao Water Art Gallery, Provincetown. She is currently teaching at Seoul Digital University.

**Greg Menco** (b. 1958 in Providence, RI) received his Fifth Year Certificate in 1983 and Studio Diploma in 1981 from SMFA and his BFA in 1981 from SMFA/Tufts University. His exhibitions include: solo shows at Bernard Toale Gallery, Boston (2003, 2005, 2007); group exhibitions at Clark University, Worcester, MA (2011); Boston Sculptors Gallery (2006); Fitchburg Museum (2006) and Danforth Museum of Art, Framingham, MA (2002). His work is in the collections of the Ritz-Carlton Georgetown; XV Beacon Hill Hotel; the Residences at the Ritz-Carlton, Boston; Wellington Management and Meditech. He currently teaches at Massachusetts College of Art and Design and Tufts University.

**Christopher Mark Robinson** (b. 1982 in Detroit, MI) received his MFA in 2012 from Bard College and his BFA in 2005 from SMFA/Tufts University. His exhibitions include: Curatorial Research Lab, Winkelman Gallery, New York (2011) and Hochschule für bildende Künste, Hamburg, Germany (2011). Later this year his paper, "Michel Parmentier: 'Arche-drawing' + the Inscription of Labor" will appear in the journal *Scorched Earth*.

**Andi Sutton** (b. 1980 in Minneapolis, MN) received her BA in 2003 from Tufts University and her BFA in 2003 from SMFA/Tufts University. Her exhibitions include: Los Angeles County Museum of Art, Los Angeles; Western Front, Vancouver; Yerba Buena Center for the Arts, San Francisco; Yogyakarta New Media Art Laboratory, Yogyakarta, Indonesia; SMART Museum, Chicago; Universidad Nacional, Bogota, Colombia; the Anthology Film Archives, New York and Mills Gallery, Boston. She is an active member of the performance group, The National Bitter Melon Council. She currently works at MIT as the Program Coordinator for the Graduate Consortium in Women's Studies.

***About the School of the Museum of Fine Arts, Boston:***

*Founded in 1876 and accredited by the National Association of Schools of Art and Design, the School of the Museum of Fine Arts, Boston (SMFA), is one of only three art schools in the country affiliated with a major museum—the Museum of Fine Arts, Boston. Our mission is to provide an education in the fine arts—for undergraduate and graduate artists—that is interdisciplinary and self-directed. This education values cultural, artistic and intellectual diversity; it embraces a wide range of media; it stresses the development of individual vision and its relation to culture in general; it values equally the knowledge gained by thinking and doing; it is deeply engaged with the world as a whole. If the mission is constant, its practice is always transforming. For more information about our programs and partnerships, visit [www.smfa.edu](http://www.smfa.edu).*

###

Digital Images Available for “SMFA Traveling Scholars”

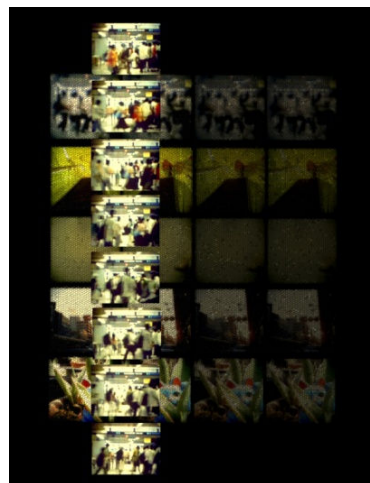
All images courtesy of the artist unless otherwise noted



For high-resolution images, call 617-369-3605 or email [bdaniels@smfa.edu](mailto:bdaniels@smfa.edu).



Milo Fay, *18 James Street*, 2012. Digital print on silk.  
36 ½ x 31 ½ inches.



Atsuko Ito, *day by day—day after day—from day to day—day in day out (still)*, 2011–12. Digital video.



Soojin Kim, *Cracked Oreos*, 2012. Conte crayon on paper.  
95x120 inches. Courtesy of the artist and Tao Water Gallery.



Greg Menceff, *My Weight*, 2010. Basswood.  
21x24x18 inches. Courtesy of Carroll and Sons.



Christopher Mark Robinson, *Wallerant Vaillant Letter Rack [pp.178–79] / Elbehaus (detail)*, 2011. 35mm slide projection.



Andi Sutton, *Gardens of the Future: Plot(ing) in Memorial (detail)*, 2012. Mixed media installation and participatory performance.